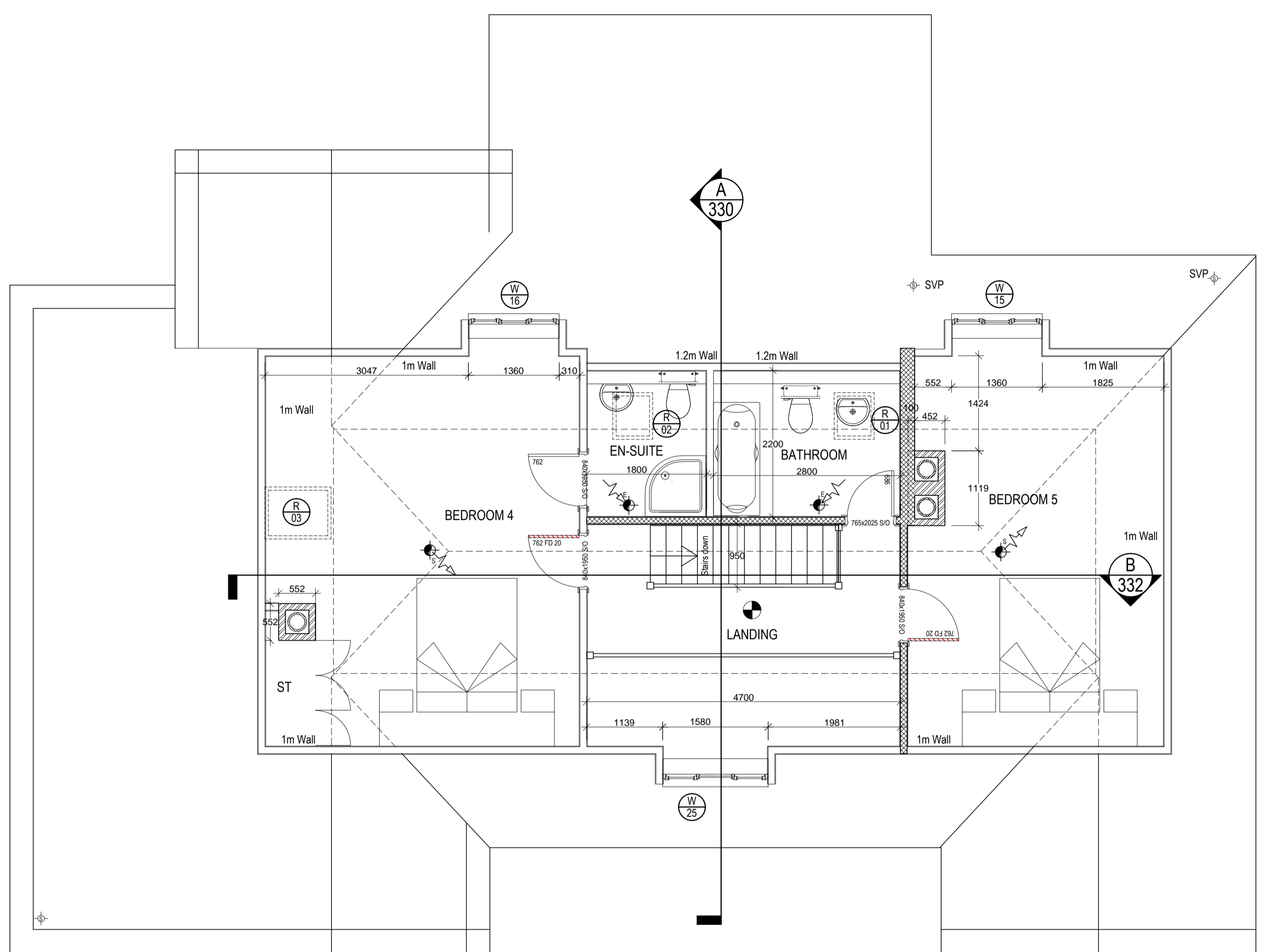
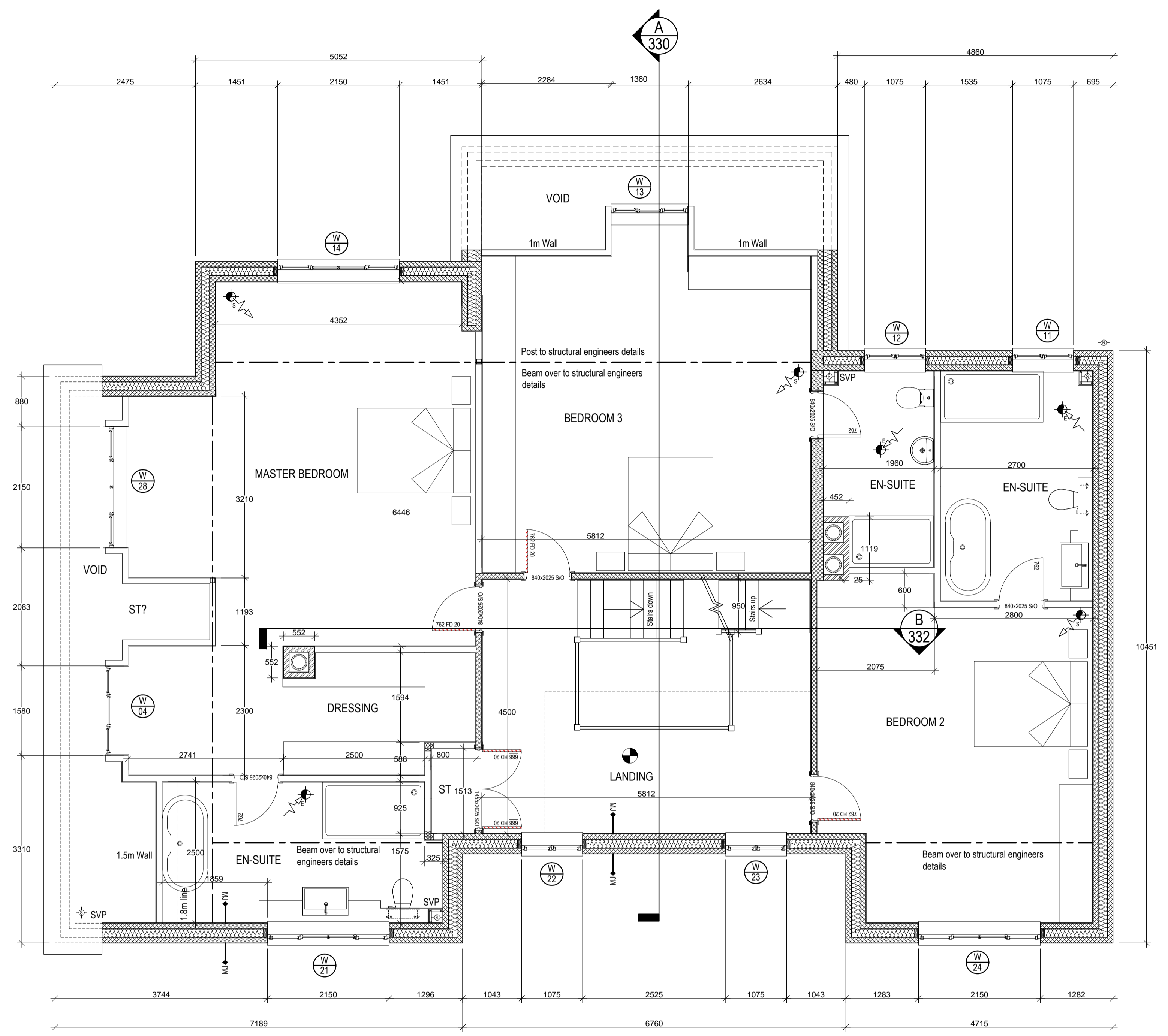


REVISIONS	
17/04/13	A Layout Amended
03/07/13	B Staircase amended
13/08/13	C bathrooms and main flue arrangement amended.
05/09/13	D Wall removed, window added to Master, velux added to Bed 4



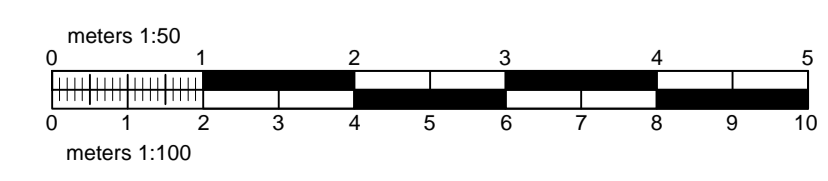
WINDOW SCHEDULE						
WINDOW REFERENCE NUMBER	ORIENTATION	FLOOR LEVEL	STRUCTURAL OPENING WIDTH (MM)	STRUCTURAL OPENING HEIGHT (MM)	WINDOW TYPE	GLAZING TYPE
1	NW	GF	1875	2100	Casement	D
2	NW	GF	1580	1500	Casement	B
3	NW	GF	538	1500	Casement	B
4	NW	1st	1580	1200	Casement	B
5	SE	GF	538	1500	Casement	B
6	SE	GF	3600	2100	Casement	D
7	NE	GF	3094	2100	Sliding	D
8	NE	GF	6627	2100	Sliding	D
9	NE	GF	2150	1200	Casement	B
10	NE	GF	1075	1200	Casement	B
11	NE	1st	1075	1200	Casement	B
12	NE	1st	1075	1200	Casement	B
13	NE	1st	1358	1200	Casement	B
14	NE	1st	2150	1200	Casement	B
15	NE	2nd	1360	1050	Casement	B
16	NE	2nd	1360	1050	Casement	B
17	SW	GF	2688	1500	Casement	B
18	SW	GF	1075	1200	Casement	B
19	SW	GF	1075	1200	Casement	B
20	SW	GF	2150	1500	Casement	B
21	SW	1st	2150	1200	Casement	B
22	SW	1st	1075	1200	Casement	B
23	SW	1st	1075	1200	Casement	B
24	SW	1st	2150	1200	Casement	B
25	SW	2nd	1580	1050	Casement	B

Glazing Type	Detail
A	Double glazing with soft low-e coating and argon fill to achieve a max U-value of 1.7W/m²k. BFR C Rated
B	Double glazing with soft low-e coating and argon fill to achieve a max U-value of 1.4W/m²k. BFR C A Rated
C	Double glazing to achieve a max U-value of 1.7W/m²k. Safety glass to BS 6206. BFR C Rated
D	Double glazing to achieve a max U-value of 1.4W/m²k. Safety glass to BS 6206. BFR C A Rated

EXTERNAL DOOR SCHEDULE							
DOOR REFERENCE NUMBER	ORIENTATION	FLOOR LEVEL	STRUCTURAL OPENING WIDTH (MM)	STRUCTURAL OPENING HEIGHT (MM)	LEAF SIZE (MM)	GLAZING TYPE	U-VALUE (W/m²k)
1	SW	GF	1022	2100	914 x 2044		3
2	NW	GF	932	2100	838 x 2044		3

ROOFLIGHT SCHEDULE					
ROOFLIGHT REFERENCE NUMBER	ORIENTATION	STRUCTURAL OPENING WIDTH (MM)	STRUCTURAL OPENING HEIGHT (MM)	WINDOW TYPE	GLAZING TYPE
1	NE	600	719	Velux	B
2	NE	600	719	Velux	B

This drawing and design remain the property of BRD TECH LTD and should not be reproduced or altered in any way without their consent. All dimensions, levels and information indicated is to be verified on site prior to the commencement of any work on site. Any discrepancies are to be reported to BRD TECH LTD directly.



Bell Street Studios
Bell Street, Sawbridgeworth
Hertfordshire
CM21 9AN
T: 01279 600110
F: 01279 722004
enquiries@brdtech.co.uk
www.brdtech.co.uk

SUSTAINABLE ARCHITECTURE

Project
**PLOT 3
SITE ADJACENT WHITEHALL LEYS
WHITEHALL ROAD,
BISHOPS STORTFORD.**

Title
**PROPOSED
FIRST AND SECOND
FLOOR PLAN**

Scale @ A1
1:50 Date
APRIL 13 Drawn By
PD

Ref
BRD/13/009/132 Rev
D