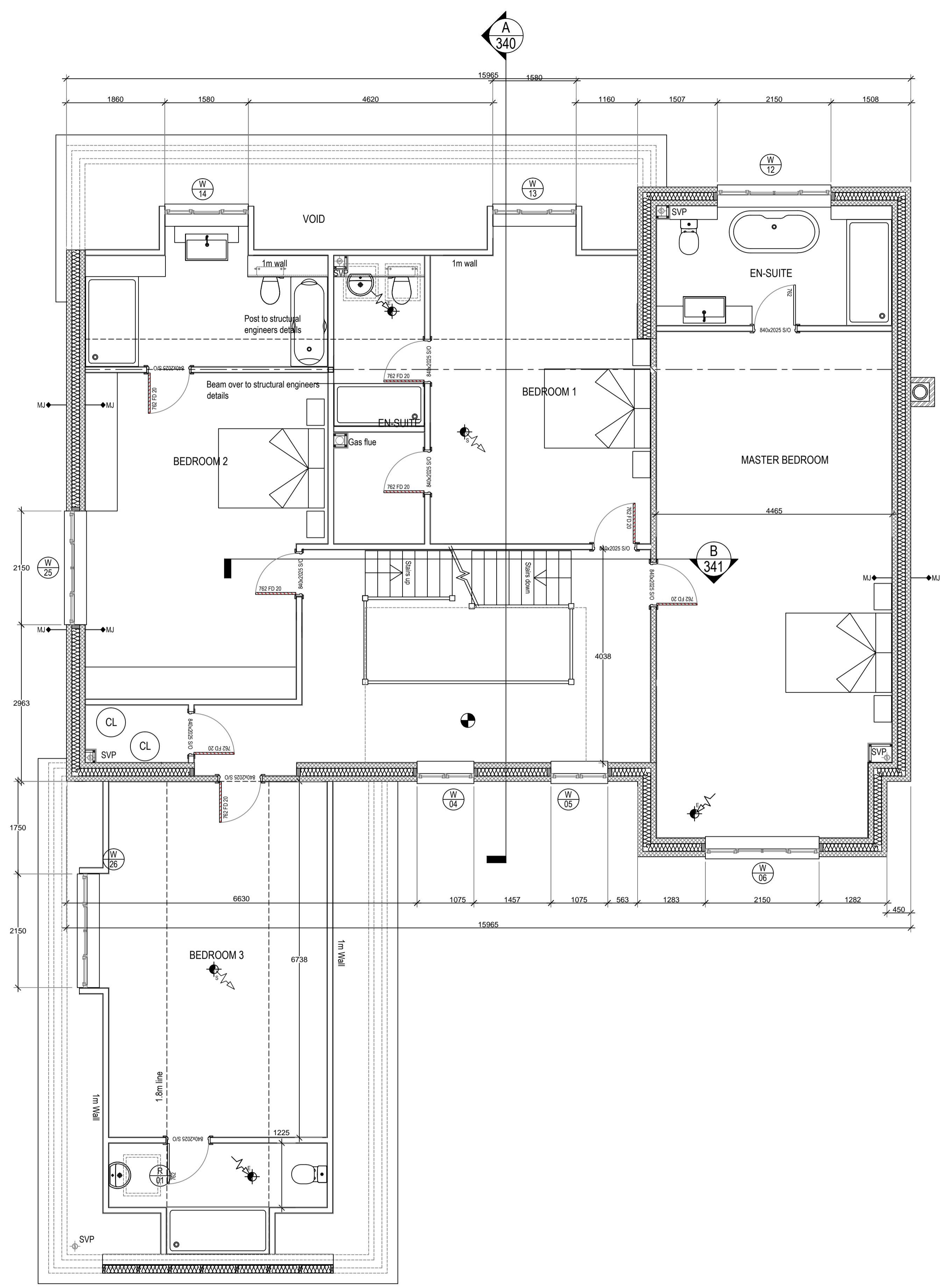
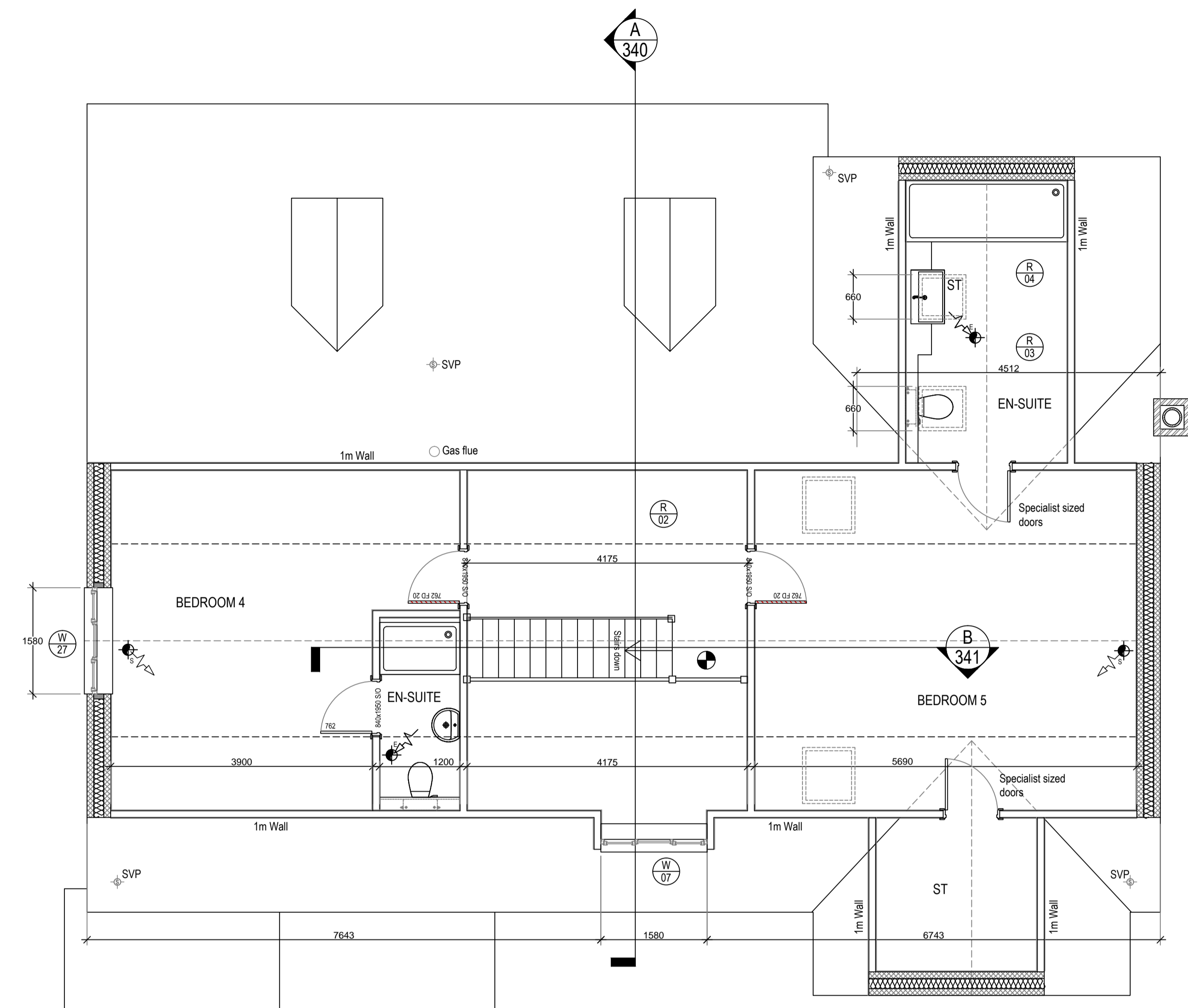


REVISIONS			
18/04/13	A	Plan amended	
13/08/13	B	En site bathroom layouts amended.	
03/09/13	C	Window sizes and schedule updated	
12/09/13	D	Window schedule updated	
09/10/13	G1	Alterations to Bed 3	
12/12/13	G2	Alterations to dormer bed 3	
13/12/13	G3	Window Alterations	
07/01/14	G4	Layout Amendments	



FIRST FLOOR PLAN



SECOND FLOOR PLAN

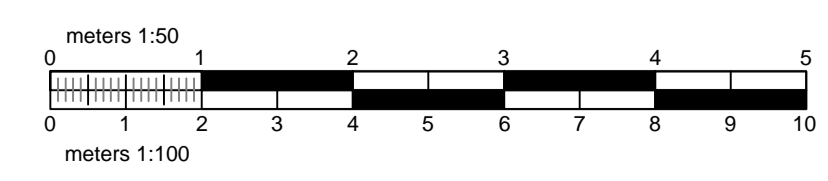
WINDOW SCHEDULE							AREAS					
WINDOW REFERENCE NUMBER	ORIENTATION	FLOOR LEVEL	STRUCTURAL OPENING WIDTH (MM)	STRUCTURAL OPENING HEIGHT (MM)	WINDOW TYPE	GLAZING TYPE	NOTES	WINDOW AREA (M²)	TOTAL AREA (M²)	GLAZING LENGTH (MM)	UNITS LENGTH (MM)	JAMB LENGTH (MM)
1	N	GF	837	1050	Casement	B		0.88	137	1050	2400	2400
2	N	GF	837	1050	Casement	B		0.88	137	1050	2400	2400
3	N	GF	1075	1050	Casement	B		1.13	1075	1050	2400	2400
4	N	GF	1075	1050	Casement	B		1.13	1075	1050	2400	2400
5	N	GF	2120	1050	Casement	B		2.28	1050	1050	2400	2400
6	N	GF	2120	1050	Casement	B		2.28	1050	1050	2400	2400
7	N	GF	3024	2120	Sliding	D	sliding folding door system	6.43	3024	2120	4200	4200
8	S	GF	3024	2120	Sliding	D	part of special conservatory system	6.43	3024	2120	4200	4200
9	S	GF	4800	2120	Sliding	D	sliding folding door system	10.13	4800	2120	4200	4200
10	S	GF	4800	2120	Sliding	D	part of special conservatory system	10.13	4800	2120	4200	4200
11	S	GF	2120	1050	Casement	B	part of special conservatory system	2.28	2120	1050	2400	2400
12	S	GF	2120	1050	Casement	B		2.28	1050	1050	2400	2400
13	S	GF	1050	1050	Casement	B		1.13	1050	1050	2400	2400
14	S	GF	1050	1050	Casement	B		1.13	1050	1050	2400	2400
15	S	GF	2120	1050	Casement	B		2.28	1050	1050	2400	2400
16	S	GF	2120	1050	Casement	B		2.28	1050	1050	2400	2400
17	S	GF	3024	2120	Casement	B	part of special conservatory system	6.43	3024	2120	4200	4200
18	S	GF	3024	2120	Sliding	D	sliding folding door system	6.43	3024	2120	4200	4200
19	S	GF	4800	2120	Sliding	D	sliding folding door system	10.13	4800	2120	4200	4200
20	S	GF	4800	2120	Sliding	D	part of special conservatory system	10.13	4800	2120	4200	4200
21	S	GF	1050	1050	Casement	B		1.13	1050	1050	2400	2400
22	S	GF	1050	1050	Casement	B		1.13	1050	1050	2400	2400
23	S	GF	1075	1050	Casement	B		1.13	1075	1050	2400	2400
24	S	GF	1075	1050	Casement	B		1.13	1075	1050	2400	2400
25	N	GF	2120	1050	Casement	B		2.28	1050	1050	2400	2400
26	N	GF	2120	1050	Casement	B		2.28	1050	1050	2400	2400
27	N	GF	1075	1050	Casement	B		1.13	1075	1050	2400	2400
28	N	GF	1075	1050	Casement	B		1.13	1075	1050	2400	2400
29	N	GF	1075	1050	Casement	B	part of special conservatory system	1.13	1075	1050	2400	2400
30	N	GF	1050	300	Casement	B		0.30	1050	1000	600	600
31	N	GF	1050	300	Casement	B		0.30	1050	1000	600	600
32	N	GF	1050	300	Casement	B		0.30	1050	1000	600	600
33	N	GF	1050	300	Casement	B		0.30	1050	1000	600	600
TOTAL								109.30	88.58	88.58	88.50	

EXTERNAL DOOR SCHEDULE							AREAS						
DOOR REFERENCE NUMBER	ORIENTATION	FLOOR LEVEL	STRUCTURAL OPENING WIDTH (MM)	STRUCTURAL OPENING HEIGHT (MM)	LEAF SIZE (MM)	GLAZING TYPE	U-VALUE (W/m²K)	NOTES	WINDOW AREA (M²)	TOTAL AREA (M²)	GLAZING LENGTH (MM)	UNITS LENGTH (MM)	JAMB LENGTH (MM)
1	N	GF	837	2120	837 x 2120	B	3		1.76	837	2120	4200	4200
2	N	GF	837	2120	837 x 2120	B	3		1.76	837	2120	4200	4200
3	N	GF	1075	2120	1075 x 2120	B	3		2.28	1075	2120	4200	4200
4	N	GF	1075	2120	1075 x 2120	B	3		2.28	1075	2120	4200	4200
5	N	GF	2120	2120	2120 x 2120	B	3		4.56	2120	2120	4200	4200
6	N	GF	2120	2120	2120 x 2120	B	3		4.56	2120	2120	4200	4200
TOTAL									16.16	16.16	16.16	16.16	16.16

ROOFLIGHT SCHEDULE							AREAS					
ROOFLIGHT REFERENCE NUMBER	ORIENTATION	STRUCTURAL OPENING WIDTH (MM)	STRUCTURAL OPENING HEIGHT (MM)	WINDOW TYPE	GLAZING TYPE	NOTES	WINDOW AREA (M²)	TOTAL AREA (M²)	TOP FINISHING LENGTH (MM)	BOTTOM FINISHING LENGTH (MM)	JAMB LENGTH (MM)	JAMB LENGTH (MM)
1	N	1000	800	Velux	B		0.80	0.80	800	800	1600	1600
2	S	1000	800	Velux	B		0.80	0.80	800	800	1600	1600
3	S	1000	800	Velux	B		0.80	0.80	800	800	1600	1600
4	S	1000	800	Velux	B		0.80	0.80	800	800	1600	1600
5	S	1000	800	Velux	B		0.80	0.80	800	800	1600	1600
6	S	1000	800	Velux	B		0.80	0.80	800	800	1600	1600
TOTAL							4.80	4.80	4800	4800	9600	9600

This drawing and design remain the property of BRD TECH LTD and should not be reproduced or altered in any way without their consent. All dimensions, levels and information indicated is to be verified on site prior to the commencement of any work on site. Any discrepancies are to be reported to BRD TECH LTD directly.

SCALE FROM THIS DRAWING AT YOUR OWN RISK.



Bell Street Studios
Bell Street, Sawbridgeworth
Hertfordshire
CM21 9AN
T: 01279 800110
F: 01279 722004
enquiries@brdtech.co.uk
www.brdtech.co.uk

bd TECH
SUSTAINABLE ARCHITECTURE

**PLOT 4
SITE ADJACENT WHITEHALL LEYS
WHITEHALL ROAD,
BISHOPS STORTFORD.**

**PROPOSED
FIRST AND SECOND
FLOOR PLAN**

Scale @ A1	1:50	Date	APRIL 13	Drn By	PD
Ref	BRD/13/009/142	Rev	G6		

Corporate Building Engineers

ACCREDITED
enb
SUSTAINABLE HOMES

BUILDING CONTROL
Partner